

WBA's Alternative Broadcast Inspection Program

“A B I P”

WBA's Alternative Broadcast Inspection Program

Overview

WBA's Alternative Broadcast Inspection Program

“The FCC's here!”

WBA's Alternative Broadcast Inspection Program

- During the COVID era, the FCC suspended most station inspections, but in April 2022 the Enforcement Bureau told field offices that they can resume random inspections.

WBA's Alternative Broadcast Inspection Program

Q: How can you prepare for an inspection?

WBA's Alternative Broadcast Inspection Program

Q: How can you prepare for an inspection?

A: Until recently, using the FCC's Self-Inspection Checklists.
(But some checklists are over 15 years old and reference obsolete rules.)

WBA's Alternative Broadcast Inspection Program

Q: How can you prepare for an inspection?

A: Until recently, using the FCC's Self-Inspection Checklists.
(But some checklists are over 15 years old and reference obsolete rules.)

A: In March 2024, the SBE and NAB released Self-Inspection Guides for television and FM radio. These are available to SBE and NAB members.

WBA's Alternative Broadcast Inspection Program

Q: How can you prepare for an inspection?

A: Until recently, using the FCC's Self-Inspection Checklists. (But some checklists are over 15 years old and reference obsolete rules.)

A: In March 2024, the SBE and NAB released Self-Inspection Guides for television and FM radio. These are available to SBE and NAB members.

A: Use the Alternative Broadcast Inspection Program. The ABIP program was established in 1996 by the FCC and various state broadcast associations to allow broadcast stations to identify and correct potential compliance gaps on their own.

WBA's Alternative Broadcast Inspection Program

How does ABIP work?

WBA's Alternative Broadcast Inspection Program

How does ABIP work?

* A station contracts with their state broadcasting association (in our case, the WBA) for an inspection. Costs are based on the type of station.

WBA's Alternative Broadcast Inspection Program

How does ABIP work?

* WBA contacts the contract inspector.

WBA's Alternative Broadcast Inspection Program

How does ABIP work?

* The inspector contacts the station, usually the chief engineer or chief operator, to set up an inspection date. There's a 150-day window from when the station signs the WBA contract and makes payment.

WBA's Alternative Broadcast Inspection Program

How does ABIP work?

* The inspection occurs on the agreed-upon date.

WBA's Alternative Broadcast Inspection Program

How does ABIP work?

* The inspector will attempt to help the Chief Operator correct any deficiencies while on site.

WBA's Alternative Broadcast Inspection Program

How does ABIP work?

* If more time is needed, the station has 60 days to correct problems.

WBA's Alternative Broadcast Inspection Program

How does ABIP work?

- * If more time is needed, the station has 60 days to correct problems.
- * **IMPORTANT:** The inspector does NOT inform the WBA or FCC of any issues!

WBA's Alternative Broadcast Inspection Program

How does ABIP work?

* After deficiencies have been resolved, the station either requests a re-inspection on site (\$), or electronically provides evidence to the inspector that issues are resolved.

WBA's Alternative Broadcast Inspection Program

How does ABIP work?

* If all is well, the inspector files a compliance form with the WBA. WBA then issues the station a compliance certificate, good for 3 years.

WBA's Alternative Broadcast Inspection Program

How does ABIP work?

* If the station is NOT in compliance by the end of 60 days, nothing happens.
(No compliance certificate is issued, and the inspector doesn't snitch to the FCC.)

WBA's Alternative Broadcast Inspection Program

If an FCC Field Agent visits a station and is shown an ABIP compliance certificate, the agent will wish the station a good day and leave.

WBA's Alternative Broadcast Inspection Program

If an FCC Field Agent visits a station and is shown an ABIP compliance certificate, the agent will wish the station a good day and leave.

USUALLY.

WBA's Alternative Broadcast Inspection Program

Exceptions:

- * Interference
- * Other non-compliant operation reported to the FCC in a complaint

(In these cases, the FCC can and will inspect, regardless of ABIP status.)

WBA's Alternative Broadcast Inspection Program

Recent violations

(courtesy of The Broadcaster's Desktop Resource, <https://www.thebdr.net>)

July 24, 2024: W234CZ/Chattanooga TN and W288DU/Canton MS failed to file a timely renewal application but continued operating. Both fined \$6,500.

WBA's Alternative Broadcast Inspection Program

Recent violations

(courtesy of The Broadcaster's Desktop Resource, <https://www.thebdr.net>)

July 11, 2024: Eight educational TV stations in Mississippi failed to place quarterly issues/programs lists in their online public file, jeopardizing their license renewal. Fined \$5,625 and ordered to implement a compliance plan. (Licenses were renewed.)

WBA's Alternative Broadcast Inspection Program

Recent violations

(courtesy of The Broadcaster's Desktop Resource, <https://www.thebdr.net>)

July 9, 2024: Oregon Public TV stations KFTS/Klamath Falls and KSYS/Medford failed to place quarterly issues/program lists in their online public inspection file. Fined \$16,500 and ordered to implement a compliance plan. (Licenses were renewed.)

WBA's Alternative Broadcast Inspection Program

Recent violations

(courtesy of The Broadcaster's Desktop Resource, <https://www.thebdr.net>)

June 18, 2024: An FCC field agent attempted to inspect Florida LPFM station WJUP-LP/Jupiter, but the station was off the air, failed to make the station available for inspection, and the licensee's president was uncooperative and did not return the agent's follow-up calls. Fined \$25,000, which if not paid within 30 days would be referred to the Department of Justice for enforcement.

WBA's Alternative Broadcast Inspection Program

Recent violations

(courtesy of The Broadcaster's Desktop Resource, <https://www.thebdr.net>)

May 9, 2024: KASA/Phoenix had applied for an STA to operate temporarily on a longwire antenna due to a property sale. But after 5 years, they were still on the "temporary" antenna and never renewed the STA. Their license was canceled.

WBA's Alternative Broadcast Inspection Program

Recent violations

(courtesy of The Broadcaster's Desktop Resource, <https://www.thebdr.net>)

April 23, 2024: Noncommercial FM station WBAI/New York aired announcements to be considered commercial in nature and did not provide proper sponsorship identification. Fined \$25,000 and ordered a compliance plan to be implemented.

WBA's Alternative Broadcast Inspection Program

ABIP Inspection Items

- * Station documents and authorizations
 - Licenses
 - Renewal postcard
 - Chief Operator designation letter
 - Most recent transmitter proof of performance

WBA's Alternative Broadcast Inspection Program

ABIP Inspection Items

- * Transmit antenna at licensed coordinates
- * Tower lighting, fencing, painting
- * Transmitter power determination
- * Remote control, calibration

WBA's Alternative Broadcast Inspection Program

ABIP Inspection Items

- * Emergency Alert System
 - Monitoring the correct assignments or sources according to the state EAS plan
 - Logging tests sent and received
 - Summary/review by Chief Operator (or designate) every week, with notes explaining missed tests

WBA's Alternative Broadcast Inspection Program

ABIP Inspection Items

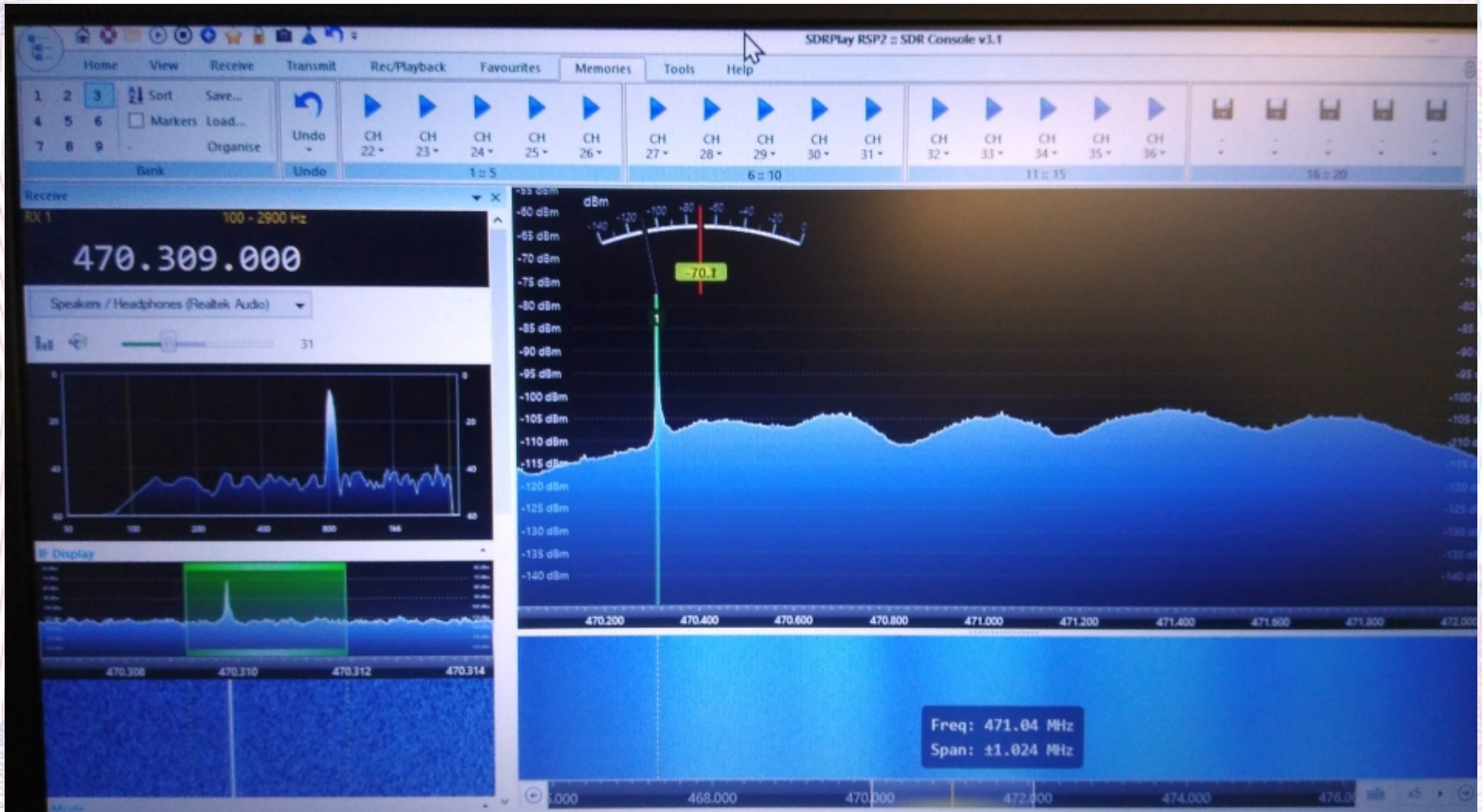
* Other items are specific to AM, FM, and TV stations

WBA's Alternative Broadcast Inspection Program

ABIP Inspection Items

- * Television-specific items
 - ATSC pilot frequency
 - PSIP tables
 - Modulation eye pattern (or SNR or MER)
 - CALM Act (commercial loudness) compliance

WBA's Alternative Broadcast Inspection Program



WBA's Alternative Broadcast Inspection Program

The screenshot displays a broadcast inspection software interface with three main sections:

- Left Panel (Tree View):** Lists various PID streams categorized by program. For example, Program 6 includes PCR PID 0x0051, PMT PID 0x0060, and several ES and PCR PIDs. Program 9 includes RRT, MGT, and STT PIDs.
- Middle Panel (PAT and Active PIDs):** Shows PAT Version Number: 1 and Transport Stream ID: 3187 (0x0c73). Below, it lists PMT PIDs for programs 26.1/3 through 26.7/9. The 'Active PIDs' section is sorted by rate, showing a list of PIDs and their corresponding data rates, such as 0x0031 (31.45% - 7.00 Mbps) and 0x0061 (8.29% - 1.84 Mbps).
- Right Panel (Video Decode):** Displays a grid of video thumbnails for various programs, including 'The List', 'Ice Road Truckers [TV-14(TV-14)]', 'The Virginian [TV-PG(TV-PG)]', and 'Chicago P.D. [TV-14(TV-14)]'. Each thumbnail includes a 'user cc atd' control bar.

WBA's Alternative Broadcast Inspection Program

Typical Radio Station Inspection



WBA's Alternative Broadcast Inspection Program

ABIP SPECIAL CHECKLIST

updated 2/6/24

Station _____ FCC ID _____ Date _____

STUDIO

- Chief Operator Designation
- EAS Operating Handbook (2023)
- EAS/CAP Operation
- Link to EEO on station web site (radio/TV)
- Link to station online Public File on web site
- Link to Public File /name of person to assist
- NRSC for AM stations (retain for 2 years)
- Station Log (retain for 2 years)
- STL licensed location/frequency (check for correct location on license)

TRANSMITTER AND TOWERS

- Check all owned towers
- Correct Ownership on all ASR's
- Posted ASR (for each tower)
- Posted RF warning signs
- Tower paint and lighting (**remote alarms and monitoring**)
- Tower location (**check for correct coordinates**)
- Transmitter TPO/**procedure for monitoring (schedule of checking)**
- HD carrier injection
- Transmitter positive control
- Number of bays (FM)
- AM antenna current or common point (**schedule of checking**)
- Transmitter Remote Control
- Fencing of AM tower
- Directional AM monitor points
- Directional AM monitor readings
- Quarterly tower lighting inspection
- Station monitoring and schedule procedures (**transmitter site visits**)
- Maintenance logs at transmitter
- AM day/night power and pattern change (**monitoring**)
- Checking Station Frequency/**Pilot frequency for DTV procedure**
- Procedure for monitoring station modulation (radio)



WBA's Alternative Broadcast Inspection Program

Public File check list.....

- Station Information (license/ renewal, CP, STA) [translators, STL, RPU other part 74 licenses]
- Public Broadcasting Manual [July 2008]
- Applications
- Ownership Report/related material FCC Form 323 [most current 12/1/2023, next due 12/1/2025]
- EEO for 396 (license period) (Dec 1st for over 5 employees)
- Contour Maps
- Political (2 years) must also be kept locally
- Citizen Agreement
- Donor Lists - Applicable Only for NCEs
- FCC Investigations or Complaints
- Information on Third-Party Fundraising - For NCE Stations Only
- Issues/Program list (license period) (filed quarterly)
- Time Brokerage/JSA/SSA
- Local Public Notice Announcements
- Political Matters and Controversial Issues Disclosures
- Children's programming and commercial annual report (TV) [most current 1/30/24. new 1/30/25]
- Retransmit agreements (TV)
- DTV Ancillary Service form 2100 G (TV)

EAS Monitor assignments

- 1.
- 2.
- 3.

GSSNet _____ IPAWS _____ EAS Equipment _____

Engineer _____

Email _____

Phone _____



WBA's Alternative Broadcast Inspection Program

Station Logs

A quick reminder that all broadcasters are required to maintain a "Station Log" containing information about required EAS activation, any malfunctions of tower lighting and major transmission system issues and adjustments.

Most importantly, this log must be reviewed, signed and dated weekly by the station Chief Operator.

From Alabama Broadcasters Association November 2021

WBA's Alternative Broadcast Inspection Program

fccinfo.com/cmdpro.php?sz=L&wd=1440

CAVELL MERTZ & Associates, Inc. **FCCInfo.com**
 A Service of Cavell, Mertz & Associates, Inc.
 (855) FCC-INFO

Want to Stay Competitive in your market?
 Stay Informed.
FACILITY ACTIVITY REPORT

Home FCCInfo On Google Earth FAR About US FAQ

Call Sign

AM/FM/TV	Search By	Search Parameters	Submit
<input type="radio"/> AM <input checked="" type="radio"/> FM <input type="radio"/> TV	Station Call Sign	<input type="text" value="WSJY"/> <input type="checkbox"/> Include Archive Records	<input type="button" value="Call Sign Search"/>
AM, FM, & TV	Historic Call Sign	<input type="text" value="WSJY"/>	<input type="button" value="Historic Call Search"/>
<input type="radio"/> AM <input checked="" type="radio"/> FM <input type="radio"/> TV	Community of License	City: <input type="text" value="Fort Atkinson"/> State: <input type="text" value="WI"/>	<input type="button" value="City State Search"/>
<input type="radio"/> AM <input checked="" type="radio"/> FM <input type="radio"/> TV	FCC File Number	<input type="text" value="0000186991"/>	<input type="button" value="File Number Search"/>
<input type="radio"/> AM <input checked="" type="radio"/> FM <input type="radio"/> TV	FCC Facility ID	<input type="text" value="24442"/>	<input type="button" value="Facility ID Search"/>
<input type="radio"/> AM <input checked="" type="radio"/> FM	Place Name	Within <input type="text" value="10"/> Kilometers of a Place Called <input type="text" value="Fort Atkinson"/>	



WBA's Alternative Broadcast Inspection Program

<p>WTMJ(AM) <small>Call Sign History: WTMJ from ???</small></p>	<p>620 kHz</p>	
<p>WTMJ 620 kHz Milwaukee, Wisconsin DA2: Directional Antenna: Different constants day and night Station Broadcast Schedule: Unlimited Station Class: B - Clear and Regional channel 0.25kW-50kW stations delivering only primary service Region 2 Class: B - Clear and Regional channel 0.25kW-50kW stations delivering only primary service Facility ID: 74096</p>		
<p>Status: License Application Granted: 09/14/1995 WTMJ License Expires: 12/01/2028 File Number: BL-19950222AD Prefix Type: This is a license Application Type: License to Cover</p>		
<p>FCC Website Links: This Application Other WTMJ Applications Including Superseded Applications Mailing Address Correspondence for WTMJ Correspondence related to application BL-19950222AD Service Contours - Open Street Map or USGS Map Service Contours - Google Earth/KML Public Inspection Files History Cards for WTMJ</p>		
<p>Site Location: 42-42-28.0 N 88-03-57.0 W (NAD 27) Site Location: 42-42-28.1 N 88-03-57.3 W (Converted to NAD 83)</p>		
<p>Power: 50 kW, Directional Hours: Daytime Pattern Type: Standard Towers: 4 Augmentations: 0 RMS Theoretical: 2035.16 mV/meter RMS Standard: 2138.2 mV/meter</p>		



WBA's Alternative Broadcast Inspection Program

 Federal Communications Commission

Licensing & Databases
PUBLIC INSPECTION FILE

[Home](#) [About PIF](#) [For Filers](#) [Developer](#) [FAQ](#) [Filing Comments / Petitions](#)

AM STATION PROFILE 

WTMJ MILWAUKEE, WI
Frequency **620.0** | Facility ID **74096**

Search WTMJ Profile



AM Station Information



Basic Info [Additional Documents](#)



Status: **LICENSED**  [View License Authorization](#)  [View Other Authorization](#)
License Expires: 12/01/2028
Status Date:



Facility Id: 74096
Community of License: MILWAUKEE, WI
Service: AM Station



Licensee: Good Karma Broadcasting, L.L.C.
Licensee Address: 301 W Wisconsin Avenue
Suite 200
Milwaukee, WI 53203
4142093100 [phone]



Main Studio Address: 301 W. Wisconsin Avenue
Suite 200
Milwaukee, WI 53203
(414) 967-5205 [phone]



WBA's Alternative Broadcast Inspection Program

2023

Emergency Alert System

Operating
Handbook



WBA's Alternative Broadcast Inspection Program

2023 EAS Operating Handbook

IMPORTANT: In order to optimize the value of the 2023 EAS Operating Handbook (2023 Handbook) for EAS Participants, the 2023 Handbook provides blank spaces in a writeable format for EAS Participants that may wish to tailor the handbook to accommodate their individual procedures. EAS Participants that tailor the 2023 Handbook may then save and print a tailored version for posting at their facility. Appropriate State or Local Emergency Communications Committee personnel and the manufacturer of your facility's EAS device may have additional information that will assist you in utilizing this Handbook.

Operators with EAS questions or issues should contact the following individual responsible for EAS operations at this facility:

Name: James Sparkson

Contact Information: (608) 555-1234 / sparky@wspq.fm

Post at All EAS Operator Locations



WBA's Alternative Broadcast Inspection Program

II. National-Level EAS Alert (47 CFR § 11.54)

EAS Event Code: National Emergency Message (EAN)

All facilities are required to immediately relay the National Emergency Message (EAN).

The EAN is received by our EAS unit from sources outside our facility. It is generated by Federal officials.

What do I need to do if I am the operator on duty? (check one)

At this facility, EANs are relayed automatically, with no operator intervention.

- OR -

At this facility, the operator on duty is required to perform the following steps to relay an EAN:

- Step 1:
- Step 2:
- Step 3:
- Three short data bursts indicate that the End of Message (EOM) code has been received and that the alert will finish by itself, after which regular programming will resume.

What does the EAN sound like?

The EAN begins with the EAS Header Code (three long EAS data bursts), followed by the EAS attention signal (an 8-second tone), then the President or other authorized Federal official will speak for as long as necessary. There is no time limit to the EAN alert. The EAN will end with the EOM code (three short EAS data bursts).

There may be silence, or a repeating "please stand by" message during the EAN before the President or other authorized Federal official begins speaking.

What if I am the operator on duty and have a problem?



WBA's Alternative Broadcast Inspection Program

III. Required National EAS Test (47 CFR § 11.61(a)(3))

EAS Event Code: Nationwide Test of the Emergency Alert System (NPT)

All facilities are required to immediately relay the NPT.

The Nationwide EAS Test is received by our EAS unit from sources outside our facility. It is generated by Federal officials.

What do I need to do if I am the operator on duty? (check one)

At this facility, NPTs are relayed automatically, with no operator intervention.
- OR -

At this facility, the operator on duty is required to perform the following steps to relay an NPT:

- Step 1: _____
- Step 2: _____
- Step 3: _____
- Three short data bursts indicate that the End of Message (EOM) code has been received, and that the test is over.

What does the NPT sound like?

The NPT consists of the EAS Header Code (three long EAS data bursts), the EAS Attention Signal (an 8 second tone), the test script (an audio message), and the EOM code (three short EAS data bursts).

What if I am the operator on duty and have a problem?

If the NPT test does not run, NEVER try to originate one yourself. Instead, note in detail what happened and report the issue to the individual responsible for EAS operations at this facility.

For guidance on resolving problems, see the section on Recovery Procedures at the back of this Handbook.



WBA's Alternative Broadcast Inspection Program

IV. Required Monthly EAS Test (47 CFR § 11.61(a)(1))

EAS Event Code: Required Monthly Test (RMT)

SENDING THE RMT: Not all facilities originate RMTs. (check one)

This facility sometimes originates RMTs. See instructions at: _____.
- OR -

At this facility, operators should NEVER originate an RMT.

RECEIVING THE RMT: When the Monthly EAS Test is received by our EAS unit from sources outside our facility, the operator shall follow the guidance below.

What do I need to do if I am the operator on duty? (check one)

At this facility, received RMT tests are relayed automatically, with no operator intervention.

- OR -

At this facility, the operator on duty is required to perform the following steps to relay a received RMT:

- Step 1: Wait for a natural break in programming
- Step 2: On the SAGE EAS unit, press the PEND button
- Step 3: Wait for audio message and 3 EOM data bursts to end, resume programming
- Three short data bursts indicate that the End of Message (EOM) code has been received, and that the test is over.

At this facility, the Required Monthly Test shall be run within ⁵⁹ minutes of being received by the EAS equipment. (Maximum time allowed between receipt and transmission is sixty (60) minutes. 47 CFR § 11.61(a)(1)).

What does the RMT sound like?

The RMT includes the EAS Header Code (three long EAS data bursts), the EAS Attention Signal (an 8-second tone), the test script (an audio message), and the EOM (three short EAS data bursts).

WBA's Alternative Broadcast Inspection Program

V. Required Weekly EAS Test (47 CFR § 11.61(a)(2))

EAS Event Code: Required Weekly Test (RWT)

If this box is checked, our facility is exempt from originating the Required Weekly Test and all information below can be disregarded by the operator.

If the box above is not checked, all information below applies to our facility.

The EAS Required Weekly Test is originated by the EAS unit at our facility.

What do I need to do if I am the operator on duty? (check one)

At this facility, RWT tests are originated automatically, with no operator intervention.

- OR -

At this facility, the operator on duty is required to perform the following steps to originate an RWT:

- Step 1: On the SAGE EAS unit, press WEEK
- Step 2: Enter password: 9876
- Step 3: When ready, press PROCEED
- Three short data bursts indicate that the End of Message (EOM) code has been received, and that the test is over.

What does the RWT sound like?

The RWT includes the EAS Header Code (three long EAS data bursts), a pause, and the EOM (three short EAS data bursts). There is NO EAS Attention Signal (8 second tone) or test script (audio message) within the RWT.

What if I am the operator on duty and have a problem?

If the RWT test does not run, note in detail what happened and immediately report the issue to the individual responsible for EAS operations at this facility so the test can be rescheduled.

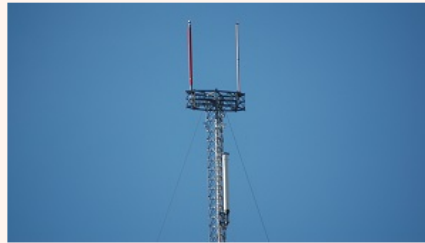


WBA's Alternative Broadcast Inspection Program

Society of Broadcast Engineers



The Association for Broadcast and
Multimedia Technology Professionals



CHAPTER 24, Inc., MADISON, WI

[Home](#) [Meetings Schedule](#) [Meeting Minutes](#) [Chapter By Laws](#) [Chapter Officers](#) [Technical Documents](#) [EAS Info](#) [Chapter Archives](#) [Sustaining Members](#) [Broadcasters Clinic](#) [DTV for Consumers](#) [Links](#)



Wisconsin EAS Broadcast Chair - Chris Tarr ([E-mail](#))

This is the official page for the Wisconsin EAS Plan. Files on this page will be updated as the State Plan is updated. To determine if you need to download any updated files since your last visit, compare dated titles below to those you currently have.

PDF files of the EAS Plan items listed on this page may be downloaded by right-clicking on the desired link. Then, select "Save Target As..." or "Save Link As...", and save as desired. This method will preserve the original file name.

To possess the entire State EAS Plan, you should have a copy of the Main Plan, as well as each of the Appendices below.

These files are in Adobe Acrobat format. If you do not have an Acrobat Reader on your computer, you may download one free at the link below.

- [Main Plan - Jul, 2024 \(MAIN0724.pdf\)](#) = Main Section of Wisconsin EAS Plan - 25 Pages, 404 KB
- [Appendix A - Feb, 2023 \(AP-A0223.pdf\)](#) = Table of Monitoring Assignments - 10 Pages, 357 KB
- [Appendix B - Feb, 2023 \(AP-B0223.pdf\)](#) = NOAA Weather Radio Stations and Coverage - 4 Pages, 350 KB
- [Appendix C - Feb, 2023 \(AP-C0223.pdf\)](#) = Master List of EAS Event Codes Used in Wisconsin - 4 Pages, 165 KB
- [Appendix D - Feb 2023 \(AP-D0223.pdf\)](#) = Authorized Sources for Activating the EAS - 1 Page, 66 KB
- [Appendix E - Feb, 2023 \(AP-E0223.pdf\)](#) = Boundary Map of Wisconsin EAS Local Areas - 1 Page, 89 KB
- [Appendix F - Jul, 2024 \(AP-F0724.pdf\)](#) = State Emergency Communications Committee (SECC) - 2 Pages, 82 KB
- [Appendix G - Mar, 2016 \(AP-G0316.pdf\)](#) = Plan Approvals - 1 Page, 178 KB
- [Appendix H - Feb, 2023 \(AP-H0223.pdf\)](#) = Monitoring Assignment Waivers Issued in Wisconsin - 3 Page, 120 KB
- [Appendix J - Feb, 2023 \(AP-J0223.pdf\)](#) = FCC Mapbook for Wisconsin - Coversheet - 2 Pages, 82 KB



WBA's Alternative Broadcast Inspection Program

FEBRUARY 2023

WISCONSIN EAS PLAN
APPENDIX A / Page 4

APPENDIX A: TABLE OF MONITORING ASSIGNMENTS for Legacy EAS
(Continued)

Local Area: SOUTH

State Relay (SR) Station: WERN, 88.7 MHz, Madison and WHHI, 91.3 MHz, Highland						
INPUT STATUS	1-Mandated	2-Mandated	#3-Agreed	#4-Agreed	#5-Agreed	#6-Agreed
MONITORED SOURCE	ECB/OC Fiber Ch.	LP-1 Stations WIBA-AM WIBA-FM	Madison Wx Radio	LP-2 Station WOLX-FM	Spare	Spare
FREQUENCY	Direct Feed	1310/101.5	162.55	94.9 MHz		
EAS LEVELS	N/S	N/S/L/W	W/D/L	N/S/L/W		

Local Primary 1 (LP-1) Stations: WIBA-AM/FM, Madison						
INPUT STATUS	1-Mandated	2-Mandated	#3-Agreed	#4-Agreed	#5-Agreed	#6-Optional
MONITORED SOURCE	SR Station WERN	LP-2 Station WOLX-FM	Madison Wx Radio	SiriusXM Satellite	Spare	Spare
FREQUENCY	88.7 MHz	94.9 MHz	162.55	Preview Channel 01		
EAS LEVELS	N/S/L/W/D/H	N/S/L/W	W/D/L	N		

Local Primary 2 (LP-2) Station: WOLX-FM, Baraboo / Madison						
INPUT STATUS	1-Mandated	2-Mandated	#3-Agreed	#4-Agreed	#5-Agreed	#6-Optional
MONITORED SOURCE	SR Station WERN	LP-1 Stations WIBA-AM WIBA-FM	Madison Wx Radio	Spare	Spare	Spare
FREQUENCY	88.7 MHz	1310/101.5	162.55			
EAS LEVELS	N/S/L/W/D/H	N/S/L/W	W/D/L			

Dane, Rock, Green, Columbia, and Sauk Counties: All PN Stations / Cable Operators						
INPUT STATUS	1-Mandated	2-Mandated	#3-Optional	#4-Optional	#5-Optional	#6-Optional
MONITORED SOURCE	SR Station WERN	LP-1 Stations WIBA-AM WIBA-FM	Madison Wx Radio ⁺	LP-2 Station WOLX-FM	Spare	Spare
FREQUENCY	88.7 MHz	1310/101.5	162.55	94.9 MHz		
EAS LEVELS	N/S/L/W/D/H	N/S/L/W	W/D/L	N/S/L/W		

Richland, Iowa, and Lafayette Counties: All PN Stations / Cable Operators						
INPUT STATUS	1-Mandated	2-Mandated	#3-Optional	#4-Optional	#5-Optional	#6-Optional
MONITORED SOURCE	SR Station WHHI	LP-1 Stations WIBA-AM WIBA-FM	Madison Wx Radio ⁺	LP-2 Station WOLX-FM	Spare	Spare
FREQUENCY	91.3 MHz	1310/101.5	162.55	94.9 MHz		
EAS LEVELS	N/S/L/W/D/H	N/S/L/W	W/D/L	N/S/L/W		



WBA's Alternative Broadcast Inspection Program

○ § 73.1870 Chief operators.

- (a) The licensee of each AM, FM, TV or Class A TV broadcast station must designate a person to serve as the station's chief operator. At times when the chief operator is unavailable or unable to act (e.g., vacations, sickness), the licensee shall designate another person as the acting chief operator on a temporary basis.
- (b) Chief operators shall be employed or serve on the following basis:
 - (1) The chief operator for an AM station using a directional antenna or operating with greater than 10 kW authorized power, or of a TV station is to be an employee of the station on duty for whatever number of hours each week the station licensee determines is necessary to keep the station's technical operation in compliance with FCC rules and the terms of the station authorization.
 - (2) Chief operators for non-directional AM stations operating with authorized powers not exceeding 10 kW and FM stations may be either an employee of the station or engaged to serve on a contract basis for whatever number of hours each week the licensee determines is necessary to keep the station's technical operation in compliance with the FCC rules and terms of the station authorization.
 - (3) The designation of the chief operator must be in writing. Agreements with chief operators serving on a contract basis must be in writing with a copy kept in the station files.
- (c) The chief operator is responsible for completion of the following duties specified in this paragraph below. When these duties are delegated to other persons, the chief operator shall maintain supervisory oversight sufficient to know that each requirement has been fulfilled in a timely and correct manner.
 - (1) Inspections and calibrations of the transmission system, required monitors, metering and control systems; and any necessary repairs or adjustments where indicated. (See § 73.1580.)
 - (2) Periodic AM field monitoring point measurements, equipment performance measurements, or other tests as specified in the rules or terms of the station license.
 - (3) Review of the station records at least once each week to determine if required entries are being made correctly. Additionally, verification must be made that the station has been operated as required by the rules or the station authorization. Upon completion of the review, the chief operator or his designee must date and sign the log, initiate any corrective action which may be necessary, and advise the station licensee of any condition which is repetitive.
 - (4) Any entries which may be required in the station records. (See § 73.1820.)

WBA's Alternative Broadcast Inspection Program

Tower Inspection Update

Last week we wrote about inspecting the station tower structure after a severe storm with high winds, ice, or snow. What about regular inspections of tower structures?



As detailed in TIA/EIA 222-F, maintenance and inspection of steel antenna towers and antenna supporting structures should be performed by the owner on a routine base, however, "routine" is open to interpretation. They recommend that all structures should be inspected after severe wind and/or ice storms or other extreme loading conditions.

The document is more specific on suggesting a time for major inspections: *3 years* for guyed towers and every *5 years* for self-supporting structures.

Shorter inspection intervals should be considered for structures in coastal saltwater environments, in corrosive atmospheres, and in areas subject to frequent vandalism, according to the standard. A tower inspection includes not just the steel structure and guy system, but all items attached to the tower, lights, cables, and antennas.

We encourage engineers to review their transmitter maintenance logs to determine when the last inspection was completed. I know there will be an expense involved, but it is far far less than replacing the structure should something fail. When having an inspection done, request pictures and a written report from the tower inspectors. Above all remember....you get what you pay for, so hire a reputable company.

From ALABAMA BROADCASTERS ASSC. 1/31/21



WBA's Alternative Broadcast Inspection Program

ALTERNATIVE BROADCAST INSPECTION PROGRAM REPORT (FM)

For
Wisconsin Broadcasters Association
44 E. Mifflin Street, Suite 900
Madison, WI 53703

DATE OF INSPECTION

CALL LETTERS

LICENSEE

CITY OF LICENSE

CONTACT PERSON

E-MAIL

MAILING ADDRESS

PHONE

CITY

STATE

ZIP

FM FREQUENCY

CLASS

TPO/ERP

ANTENNA HEIGHT

DIRECTIONAL?

STUDIO LOCATION

The facility is in substantial compliance with Part 73 and Part 74 of the Federal Communications Commission's Rules. **A Certificate of Compliance will be issued by WBA.**

The facility has minor deficiencies as noted. **After the licensee details the successful corrective actions for each deficiency by means of a letter to the undersigned, a certificate of compliance can be issued.**

The facility has many minor deficiencies and/or one or more major deficiencies as noted. **After the deficiencies have been corrected a re-inspection must be made before a certificate of compliance can be issued.**

If box #1 is checked WBA will notify the FCC that your facility has passed the ABIP inspection and will send your station a Certificate of Compliance within 30 days. Per the WBA/FCC Agreement, your station will be immune from routine FCC inspections for a period of 3 years from the date of this inspection.

If box #2 is checked you have 60 days from the date of inspection to correct all the deficiencies noted and notify the undersigned via letter detailing how each deficiency was corrected. **If such a letter is not received by the end of the 60-day period your immunity from inspection will expire and a complete re-inspection will be required before certificate of compliance can be issued.**

If box #3 is checked you have 60 days from the date of inspection to correct the deficiencies noted and request a partial re-inspection. If the deficiencies go uncorrected, at the end of this period your immunity from inspection will expire and a complete re-inspection of the facilities will be required before a certificate of compliance can be issued.

Clifford J. Groth, CSRE
ABIP INSPECTOR

Date



WBA's Alternative Broadcast Inspection Program

Resources

FCC online public inspection files: <https://publicfiles.fcc.gov>

SBE Checklists: <https://sbe.org> - Resources tab - "Self-Inspection Guides" (members only)

Current FCC Rules: <https://www.ecfr.gov/current/title-47/chapter-1/subchapter-C/part-73>

FCC EAS Handbook download:
<https://www.fcc.gov/files/eashandbook0123pdf>

Wisconsin State EAS Plan: <https://www.sbe24.org>

Broadcasters' Desktop Resource: <https://www.thebdr.net>

Cavell Mertz FCC info: <https://fccinfo.com>

RabbitEars television info: <https://rabbitears.info>

